

Z 1041 E/...

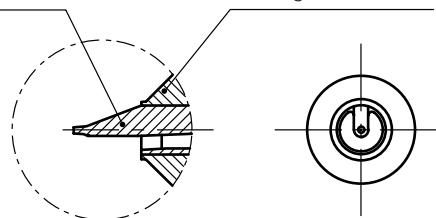
230 V ~

◀⁺ = Fe-CuNi

Spezial Molybdänlegierung
Special molybdenum alloy
Alliage molybdène spécial

CuCoBe-Legierung
CuCoBe-alloy
Alliage CuCoBe

► Info



max. °C	Watt	Typ	D	L ₁	Nr./No.
360	315	..32..	32	61	Z1041E/32x 61
		..38..	38	75	38x 75
	400	..45..	45	88	45x 88
		..56..	56	112	56x112

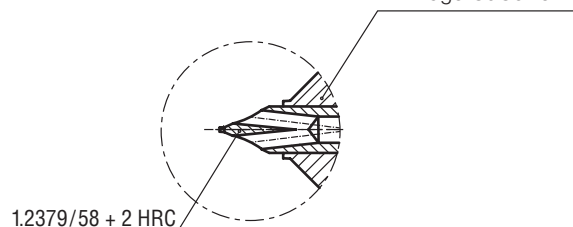
Z 1041 V/...

230 V ~

◀⁺ = Fe-CuNi

CuCoBe-Legierung
CuCoBe-alloy
Alliage CuCoBe

► Info



max. °C	Watt	Typ	D	L ₁	Nr./No.
360	315	..32..	32	61	Z1041V/32x 61
		..38..	38	75	38x 75
	400	..45..	45	88	45x 88
		..56..	56	112	56x112